

Tigerville New

"Remembering the Past – Celebrating the Present"

Thirteenth Edition – September 2013 Ephrata, Washington Beverly Mayer

EHS-100 Reunion Report



The EHS-100 Reunion committee is looking forward to the coming ten months leading up to the grand reunion on June 7-9, 2014. Projects aimed at financing the reunion are underway. Supporters can purchase the official reunion poster, reunion quilt raffle tickets, previous year's annuals, or discarded EHS trophies and plaques either on-line at ehs-100.com or from committee members.

Becoming a member of the EHS Alumni Association will not only support the reunion effort but will also help to fund future scholarships to graduating seniors.

Alumni classes can become involved in the "50 With \$5.00 Challenge". Information can be found on the reunion website. At this time \$1445.00 has been contributed through the challenge. Direct donations will be greatly appreciated since there will be no fee attached to attend the 100-year reunion. Membership applications and donations can be paid by direct mail or via pay-pal on the reunion website.

It is the goal of the reunion committee to keep the reunion expenses to a minimum. There will be no rental fees required for the use of the Ephrata School District's facilities, local establishments and organizations will operate on an individual basis in providing food, hotels and camping parks will also work independently.

Individuals and EHS alumni classes will self-fund any activities they plan during the reunion weekend including name tags or identifying clothing or signs, mini-reunions, and picnics. Groups planning a fun run, golf tournament, musical presentations, or alumni sporting event will also be responsible for expenses. In all cases, the reunion committee will assist in the scheduling, advertising and securing event sites.

Local alumni are giving of not only their time but of their talents and resources. Grace Lampman Nelson – EHS '51 has contributed 1000 business cards to aid in advertising, Denver - EHS '93 and Sara Morford contributed the \$100.00 winner's prize awarded to the poster design contest winner, Gail Mason Smith – EHS '70 and Harold Mason – EHS '68 printed and provided the quilt raffle tickets, three members of the EHS class of 1958 provided the skills in creating the reunion's raffle quilt, Gary Archer – EHS '65 and Mike Scellick – EHS '71 have collaborated in creating an EHS-100 Reunion design for reunion apparel, Greg Folsom – EHS '62 is doing a splendid job as webmaster; from cupcakes to Corvette convertible, the list is long.

The committee meeting is held the 1st Tuesday of each month and is open to any and all alumni and supporters of the Ephrata Schools. Committee leadership and membership are commended for their desire to create an event that will happily welcome former classmates and friends back to Ephrata.

Want to help out the cause? Go to "Contact Us" on the website or contact chair Bev Mayer at 509 754-3041 to volunteer. Event organizers and worker-bee volunteers will be needed on the reunion weekend.

EHS-100 Reunion Quilt

There are lots of quotes about quilters. The quote that best describes three friends from the Ephrata High School Class of 1958 is, **“Good friends are like quilts; they age with you yet never lose their warmth”**.

Jan Southern Barr, Judi Pfeifer Woods, and Melinda Tomlin Farmer, long-time friends decided that they would like to contribute to the Ephrata High School's 100-year reunion. What better way was there than for them to contribute their time and quilting skills toward creating a quilt which they would then donate to the EHS-100 Reunion committee? The reunion committee is using the quilt as a fund- raising project; helping to defray the costs of putting on the reunion.



To estimate the number of hours the friends worked on the quilt is impossible. First, they had to create 90 individual blocks using up to 12 shapes in different fabrics; next came the assembly, machine quilting and binding. The quilt is created in the Log Cabin design, with a wide variety of black, white, and dark red fabrics. The size of the quilt is 100 inches by 100 inches – a coincidence or by design?

Jan Barr became very serious about engaging in her passion for quilting after she retired from the Grant County Public Utility District. She is a professional long-arm quilter with a business known as Whispering Winds Machine Quilting. She creates her own quilts as well as completes the quilting process for others who seek her service.

Judi Woods hasn't been quilting as long as the others but she is still just as passionate. She creates quilts for herself and family, as well as donates quilts to charitable auctions. Having retired from the Auditor's Office of Grant County in 2002 she now has the time to enjoy being creative and adding to her fabric stash.

Melinda Farmer has been sewing all of her life and since retiring from a nursing career at the Columbia Basin Hospital she has found serious quilting is a great way to express oneself artistically, learning from her mistakes as she goes along. Melinda has been quilting for 23 years; finds that quilting is a good way to relax.

Creating bed-size quilts is the main purpose of the three friends' quilting projects; they also create small-sized quilts and wall hangings. In order to complete these projects, they need large quantities of fabric, which they refer to as their “collection of fabrics”; they all agree, **“One yard of fabric, like one cookie, is never enough.”** The friends are committed to continuing their friendship by getting together regularly, but **“Only quilting on days ending in ‘Y’.”**

Creating the Raffle Tickets



Local EHS alumni Gail Mason Smith and Harold Mason took a nostalgic look at earlier-day Ephrata when they visited the Basin Street vacant building where, for many years, their parents owned and operated the Ephrata Printers. Remaining inside the building is the giant, obsolete printing machine that, in the past, spewed out many important documents and projects for the Ephrata community.

Gail and Harold decided that they wanted to crank up the old printer and provide the quilt raffle tickets for the ticket sales. First the format for the tickets was set with lead type and placed on a plate; then, one-by-one the blank ticket forms were hand fed through the giant machine. The printed raffle tickets were then hand assembled and stapled into booklets.... ready for purchase. See the “Tiger Talk” page of this website to find out how you can purchase a chance to win the beautiful EHS-100 Reunion quilt.

Ephrata High School Present and Past

Ephrata High School has opened its doors for the 2013-14 school year which promises to be an exciting year to be a Tiger from Ephrata. This year's students are leading the way into the second century of Ephrata High School's existence. The students are looking forward in anticipation of the EHS-100 Reunion which will celebrate 100 years since the first graduating class of EHS. Principal Dan Martel, the 19th principal in the history of EHS, and his staff welcomed students on Thursday, August 29th.

Members of the staff include EHS graduates **Kent Devine-EHS '76**, Ag Mechanics I/II, Animal Science; **Michele Ratigan Webb-EHS '79**, Athletic Director, Lifetime Fitness; **Marla Weber Allsopp-EHS '91**, English 11, Honors English 12, World Studies, AVID; **Mikki Roche Johns-EHS '93**, Health, AVID 10/11, Teaching Academy; **Cassie White Roloff-EHS '95**, C.O.E. Math, Adv Algebra/Trig, Algebra, Math 12; **Jason Laugen-EHS '97**, World Studies, US History, CWP; **David Tempel-EHS '00**, CWP, US History, World Studies.

Throughout the Ephrata School District highly dedicated EHS graduates are working in a variety of positions including the Ephrata School Board, administrators, school principals, teachers, and a support staff that keeps the whole system up and running. For updated information about the District and EHS log on to ephrataschools.org or ephrata.hs.schoolfusion.us.

ASB Officers 2013-2014

It is the responsibility of the Associated Student Body Executive Board to develop, organize, coordinate, and evaluate several events that will occur over the coming year. They will be aided by class officers and student council representatives. Kathleen Allstot, school librarian, is the group's advisor.



Members l-r: Chloe Spencer, secretary; Chance Flanigan, social chairperson; Manny Trejo, vice president; Freddie Ham, social chairperson; Monae Hendrickson, president; Astride Ham, publicity manager; Matthew Mortimer, treasurer and Camille Culbertson, treasurer-elect.

Football Kicks Off the Fall Sports Season

Ephrata Tiger football season kicks off with a home game against the Quincy Jacks (a.k.a. Jackrabbits) on Friday, September 6 at Kiwanis Field in a "Battle of the Basin" showdown. At stake is the golden football trophy that goes to the winner of the game. Ephrata leads the series 43-20. Even though the Tigers and Jacks no longer compete in the same league the battle goes on. The Quincy team comes to town still smarting from their 22-21 loss in 2012. The questions about the finish of the 2012 Battle of the Basin will likely be debated for years to come in both towns.

The Volleyball team takes to the court at Toppenish on September 10th. The Tigers will play nine league matches, facing each team in the Central Washington Athletic Conference (CWAC) just once.

The Girls Soccer team also faces their CWAC opponents one time. Their season begins September 28th at Wapato; before league starts they have six non-league showdowns beginning at Cashmere on September 7th.

The Cross Country runners start their season on September 14 with a run at the Ellensburg Invitational. They will compete in several non-league invitational during the year along with six league contests.

The Girls Swim team hosts a meet in Ephrata at the city's SplashZone aquatic center on September 14th. Nine teams are expected to attend. The swimmers compete in the Big-9 league and compete at the Moses Lake High School pool.



Football Season Finishes Over the Years

The most successful season-endings were in 1986 and 1987 when the Ephrata Tigers captured state championship titles. Beginning in 1920 the Tiger teams has won several league, district, and state titles in a wide variety of leagues and opponents.

LEAGUE: 1920, 1957, 1958, 1964, 1965, 1969, 1976, 1983, 1986, 1987, 1988, 1989, 1990, 1991, 1992.

DISTRICT: 1976, 1983, 1986, 1987, 1988, 1989, 1990, 1991, 1992

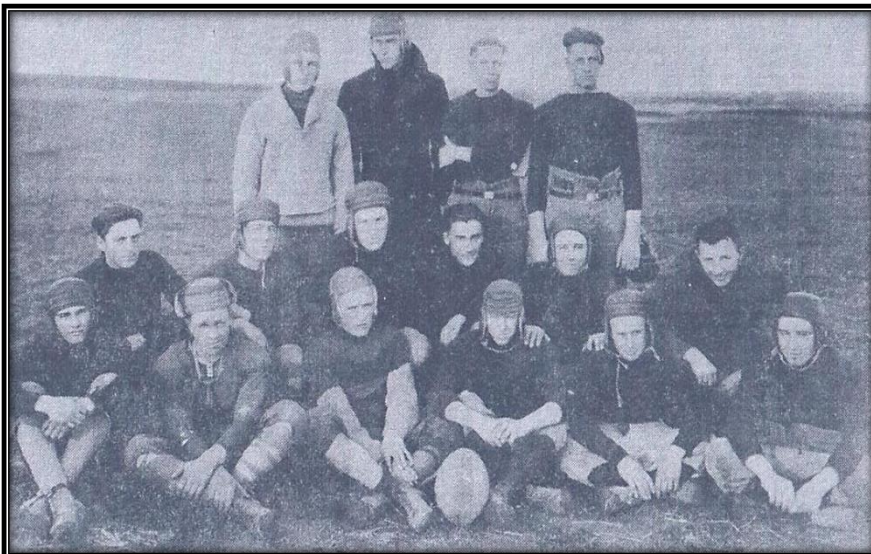
STATE: 1976-semi, 1983-quarter, 1985-quarter, 1986-1st, 1987-1st, 1988-2nd, 1989-semi, 1990-2nd, 1991-semi, 1992-quarter

1919 – 1920 Season Ephrata High School Tiger Football

Despite the laughs this Ephrata team got when it visited other schools (because of its ragged appearance), the Tigers closed the 1920 football season undefeated. It won over the Ephrata Athletic Club, Almira, Creston, Cashmere, and Waterville. The 16-member group was Ephrata High School's first football team and was coached by EHS teacher Al Sorenson.

The school had no funds for uniforms and the team had to improvise. For their pants they substituted cut-off khaki pants and had cotton padding sewn in the front of the pants legs for protection. Their shoulder pads were created from leather horse collars with the horse collar's padding used for kidney pads. Jerseys were purchased, but unfortunately nobody thought to have numbers put on them. The helmets were also purchased and came in all sizes and colors – some sat on top of the player's head and other helmets came almost down over the player's shoulders. Shoes and socks were whatever the player had handy.

The only senior on the team was Earl Hough who graduated with the class of 1920. He was also the only boy in a class numbering seven. The youngest member of the football team was eighth-grader Paul Thomas from the class of 1924.

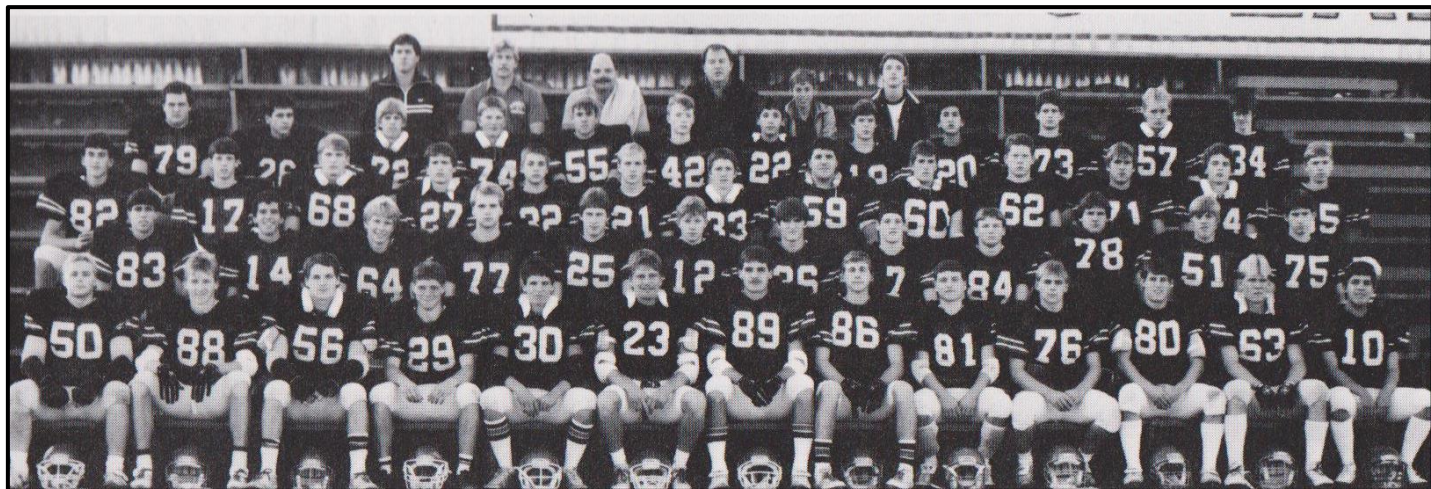


Team members from the classes of 1920 thru 1924.

Front row – James Moore, Earl Hough, Walt Hink, Russ Brobst, Jess Smith, John Soule.

Middle row - Tom Davis, Herb Davis, Paul Thomas, Dan Brashear, Ralph Forrey, Forrest Cook. Back

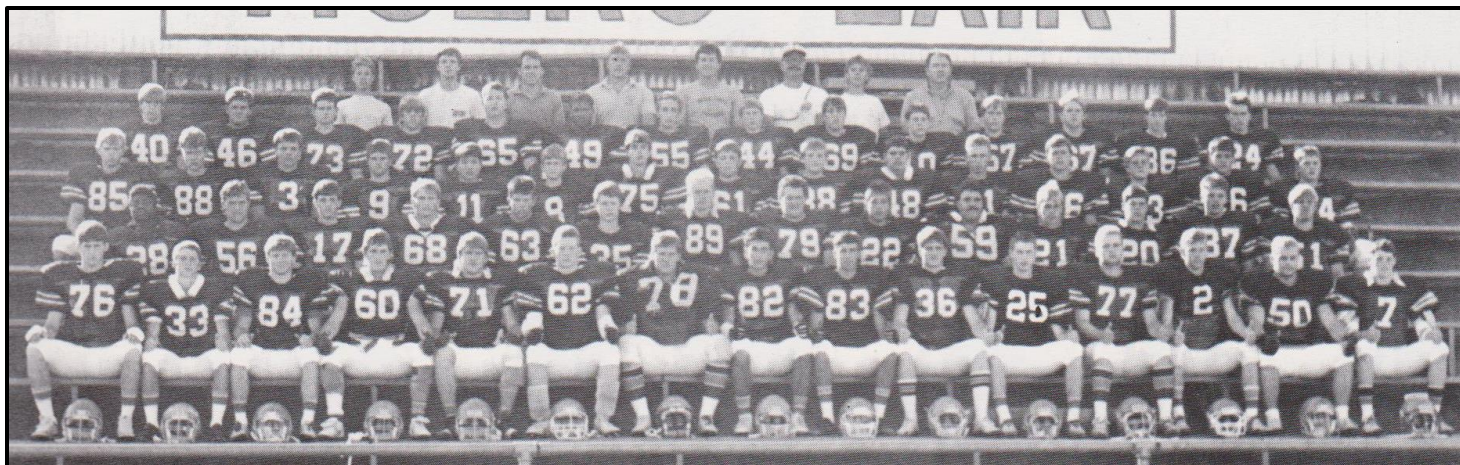
row - Al Bise, Dean Ponsler, Bob Brobst, Burley Nicks.



State "A" Football Champs 1986-1987

Top row l-r: Assistant coach Mr. Barber, Assistant Coach Mr. Junderland, Head Coach Bill Betcher, Managers Aaron Slouber, Ken Howes. 4th row: Shawn Clark, Terry Dell, Rod Pittack, Darren Hinen, Mike Wyman, Eric Duff, Kyle Aloysius, Brent Swartzentruber, Hieu Nguyen, Jason Foster, Will Mouat, Thorn Green. 3rd row: Jeff Stucky, Trent Listello, Kris Jeske, Robert Johnson, Rick Crosser, Shane White, Larry Moreno, Chris Gurr, Rod Follett, Dan Tuller, Terry Cleman, Rich Cory, Todd Wright. 2nd row: Shawn O'Brien, John Burnette, Jim Allen, Darrel Lembcke, Mike Cagle, Dale Hagy, Glen Bates, Tyson Yount, Jerry Hiatt, David Milbrandt, Steve Pittack, John Bowers. 1st row: Roger Ivarsen, Gary Hagy, Don Sollman, John Flanigan, Jason Horn, Troy Zerb, Charlie Carlson, Kirk Youngers, Mark Ellis, Rod Ivarsen, Bob Franklin, Brian Stadelman and Jose Amador.

The 1986 team had an undefeated season with a 14-0 record run through the Caribou Trail League, District playoffs and State final.. They outscored their opponents 543-55. At the State "A" Kingbowl X the Tigers won by the championship with a score of 32-15 over the Lynden-Christian Lyncs.



State "A" Football Champs 1987 – 1988

Top row l-r: Mike Fleming, Ken Howes, Coach Winters, Coach Jaderlund, Coach Barber, Coach Kinnard, Alan Zacher, Coach Betcher. 4th row: Mike Dahl, John Reece, Jason Foster, Rod Pittack, Bill Craig, Jody Miller, Robby Miller, Rick Stucky, Chris Dahl, Wade Besset, Mike Allen, Jon Barr, Glen Hammond, Robert Johnson. 3rd row: Todd Wright, Jeff George, Jesse Buchman, Joey Kriete, Nghia Nguyen, Dan Friez, Eric Craig, Bryan Ribble, Pat Berschauer, Cy Miller, David Spencer, Mike Hunter, Charlie Rathbun, Terry Dell, Darren Hinen. 2nd row: Oray Fifer, Charles Allen, Trent Listello, Kris Jeske, Randy Hovland, Eric Duff, Will Mouat, Shawn Clark, Kyle Aloysius, Chris Gurr, Shane White, Brent Swartzentruber, Brandon Whallon, Steve Pittack. 1st: John Bowers, Larry Moreno, Jerry Hiatt, Rod Follett, Terry Cleman, Dan Tuller, David Milbrandt, Jeff Stucky, Shawn O'Brien, Glen Bates, Mike Cagle, Darrel Lembcke, Dale Hagy, Roger Ivarsen, Tyson Yount.

Undefeated scoring Caribou Trail League and District Playoffs: League- Lake Roosevelt 68-0, Okanogan 41-7, Oroville 53-0, Quincy 20-0, Omak 48-13, Chelan 70-6, Tonasket 34-8, Cascade 49-20, Cashmere 42-0.

District Playoffs: Toppenish 55-7, Prosser 34-28 (OT), Colfax 49-13. Kingbowl XI Ephrata 21 - Lynden-Christian 12.

Grace Lampman Nelson Writes About Reunions

June 10, 2013 Spokesman Review



I always go to class reunions because I love them. My class, the Ephrata High School class of 1951, was and remains close-knit. We've had 10, 20, 30, 40, 50, 55 and 60th reunions.

There is a big difference between a 10-year reunion and those afterward. At the 10-year most people are getting careers off the ground, families started, so perhaps a need to impress is evident. By the 20th and 30th, we seemed to be more relaxed and have a better understanding of life and the joy in being together. It didn't matter so much where our paths have led us. Some had divorced which wasn't as accepted as readily as now, but we sure didn't let it bother us.

Living in Ephrata where I grew up is a huge help. I am usually the person who gets the ball rolling each time, but there is a core group who jump in, some don't even live here, and help put it together. I'm in contact with at least a dozen of my 51 classmates during the year. We've lost some over the years and have no idea whatever happened to them; we also lose some each year when they pass away. I like reunions because it's always wonderful to reconnect with those I don't see or hear from except at these times. We enjoy just visiting, we got rid of the "dance stuff" years ago, and we re-gather the next morning (Sundays) to have breakfast together, talk about families, and sometimes we hang out another two to three hours.

In 2011 we kind of felt that this would be our last reunion. We're all turning 80 now! But one never knows....our community is planning a reunion in June 2014 to celebrate the 100th anniversary of the first graduating class (1914) of Ephrata High School.

Many 100-year reunion events are planned. Two members of the class of 1938 still live in Ephrata; we hope they'll still be sturdy and able to join in. This reunion will include my children's classes as all ten of them are alumni. I am hoping some of them can attend.

I understand why some people don't attend reunions. They have memories of high school, didn't feel they fit in, whatever; but we're not the same people we were in our teens. So, yes, I always go to class reunions.

Note: Grace is an active member of the Ephrata High School 100-Year Reunion committee. Her generosity, along with her expertise and input regarding reunions, is greatly appreciated.

Reunion Dates and Contacts

Ephrata High School reunions scheduled for September, 2013

EHS Class of 1963 50-year reunion September 6-8
www.ephratatigers63.com

EHS Class of 1973 40-year reunion September 13-14
Linda Wanke Ebberson at lebberson1@sagensun.net



Ephrata Past

Sometimes it takes a first-hand account before the story of living in a small town is made clearer. During the 50th reunion of Ephrata High School's Class of 1960 the former classmates took a trip through Ephrata; memories were shared by those who had made earlier trips "cruising Main" in the 40s, 50s and 60s. As a member of the class I will act as tour guide and share their observations and memories. Come along and enjoy our journey.

Ephrata Reunion Tour

By Bev Mayer and the Class of 1960



In order to make a nostalgic visit to our hometown leave reunion headquarters at the Ramada Inn Moses Lake and turn left onto Highway 17; follow the signs toward Ephrata. In a few miles you will see off to the right the previous site of Larson Air Force Base. The Big Bend College and a regional airport along with industrial businesses will be found. Half-hour later, or less thanks to new highway, you will be entering the outskirts of Ephrata. Over to the right Wal-Mart sits where the Ephrata Saddle Club had its barns. Continuing on and over the railroad overpass; you will reach "B" Street, now known as Basin Street, a vital part of our youth. "B" Street is where we cruised, hung out, worked; our parent's had businesses, and we held our fun-filled "snake dances" organized in an effort to get fans enthusiastic about supporting the Tigers.

If you look over to the left you will find that Dusty's Drive In-N-Out is still going strong; even with competition from Burger King across the street. Dusty Burgers with onions taste as good as ever except that now you would probably think twice before indulging in one of those wonderfully greasy burgers and the mouth-watering onion rings.

As you turn right onto Basin Street you will find that much of Ephrata's business district has moved southward. Here is a newly remodeled Safeway in its third location since hitting Ephrata. Previously it was on Basin where Moore Furniture is now located. Prior to that, it was on "A", now Alder Street, where the City Government now operates out of that building. (Alder Street location)



When the first Safeway was opened in 1958 Dwight Yates was hired as one of the boys boxing groceries. As Dwight recalls, "I was infatuated with one of the checkers. Maybe in her mid-twenties, she was trapped in an unhappy marriage, as the saying went. On breaks she would smoke dramatically and stare off into the distance talking of 'blowing this town'. I fantasized about somehow rescuing her from her misery. Fantasizing got in the way of proper grocery bagging—eggs broke, tomatoes took a bruising. My prospects in retail began to look dim."

Past Safeway you will see Ace Hardware previously the family business of the Berschauer family. Berschauer's was described as "Your reliable second hand dealer of quality home furnishings". One summer Linda Mutch, Darlene Hendrickson and Pat Loosemore, armed with rakes, pitchforks, heavy gloves, were hired to clean up the area around the business. For the one-day job the girls received 50 cents each, which did not please the girls at all. The next day, while Pat was home recovering from her efforts; Linda and Darlene marched into Berschauer's and talked Tom's dad out of \$1.00 each for their day of work.

Continuing on you will pass the Ephrata Auto Parts where the Swanson family, Paul class of 1959 and Shirley of 1961, have taken over their father's operation of supplying the locals with parts to keep their autos working. Next door are two popular dining locations McDonald's and Tequilas Mexican Restaurant. This McDonald's business is where a lucky Ephrata woman won a contest with the prize being one million dollars. Tequilas is a prosperous business, in fact, they are currently putting up a new building down Basin Street in the vacant lot behind House Laundry.



If you look to the left and across from Tequilas you will find that Randolph's Lumber Company is out of business and a flower shop is where the South End Market once operated, supplying us with our penny candy. Next are two more auto parts stores; with the one next door to the Lee Theatre that makes four. It is hard to imagine that there is such a demand for spark plugs and batteries in Ephrata.

Next on the left is the Ephrata Auto Body business which used to be the location of a Coca Cola Distributor where Mike Lucas and Dwight Yates found work cleaning up the distributor's building after it had burned down. Mike recalls stuffing his pockets with the buried treasure of partially charred pop bottles and slightly melted candy. He can remember "the Hershey's with smoky almonds – way before smoked almonds were popular".

Barry's Chrysler is over across the street to the right, formerly known at Eastham and White Chevrolet, then Eastham Chevrolet, next Lee Snyder Chevrolet and Datsun until its latest ownership of the Morford Family.





The Lucas family purchased a 1955 Ford truck to haul furniture from the Lucas Furniture Store and then later bought a turquoise and white 1956 Chevy from the Eastham dealership.

Across the street Johnson Motors, your “Friendly Ford Dealer Since 1929”, is now a repair shop.



Traveling on down Basin Street you will see the former Savon Food Center, now The Home Center, and across the way the number two site of Safeway – Moore Furniture.

The AmericaWest Bank on the left is where a vacant lot used to be and where we “burned the bunny” at one of our high school rallies. (1958-59 Football team went on to beat the Jacks 63-0.)

Further on to the right is the annex to Les Schwab’s Tire Store. At this location my dad opened up Curt’s Second Avenue Texaco. In 1960 it was advertised as “the newest station in town”. Pat Loosemore and I delivered cars to owners once Curt’s workers had completed servicing them. We worked for gas to put in my 1951 black Chevy hardtop so we could get to school on time and do our cruising on the weekends.



Across from Schwab’s is an office offering wireless internet services and where Mike Lucas’ dad Dick managed the Dallam Furniture Store, the place “where happy homes begin”. In 1955 the Lucas family opened up Lucas Furniture on the north end of “B” Street.

Next you will come upon the Ephrata Recreation Center where KOVE was held for card-carrying students of Ephrata High School and where dancing was the major activity. Remember Bill Haley and His Comets singing “Rock Around the Clock”? We all got our moves from watching American Bandstand. What KOVE stands for is still a mystery. Maybe Lyndalou Vaughn, our KOVE representative, can supply the answer. The E.R.C. is hopping these days with young Mexican girls celebrating at their Quinceareras; along with wedding receptions and church services.





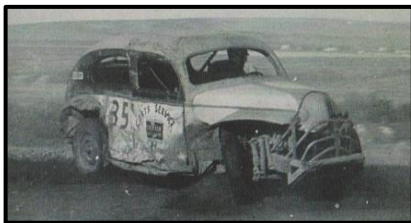
The SavMor Drug Store and its soda fountain are long gone. Currently the building sports a paint job depicting Native American symbols making the Second Hand Prose one of the most distinctive businesses in Ephrata. The building is a good place to go for used reading materials.

Further up is the Milady's Shoppe where Pat Loosemore's mom was a partner in the business and where Pat worked after school. Milady's is closed but the current occupants at this location are still making Ephrata women pretty in their beauty shop.



Across the street is the long-abandoned MarJo Theatre where John Fink's mother sold tickets for the Saturday matinees so that we could get in and watch Roy and Dale riding across the screen. Did you know that the theatre was owned by MARy and JOhn Lee, thus the name MarJo, and that they later opened up the Lee Theatre?

Nearby is a vacant lot where my dad had his first business in Ephrata, Curt's Chevron. John Fink reminded me that in the late 40s, early 50s gas was 15 cents per gallon there. Here is where my dad worked on his popular #35 racing car. Some of



the boys in our class were very impressed with the car and excitedly attended races at the Soap Lake Speedway. Why did my dad pick #35 for his car?

Well the number started out as the telephone number of the station's business, 355 - J. Officials said that was too long so he settled for 35. Later on local telephone numbers were Skyline 2696 and then SK 7-2696, finally 754-2696.



Directly across Basin, and also on the corner, was the site of J. D. Williams Jewelry store with the landmark clock on the sidewalk. The clock is now located on Alder



Street at the train station. Today the William's building is where the Chamber of Commerce disperses information. This corner building is part of the greater Bell Building which housed a hotel and various other businesses.

Further up Division is where the Bell Barber Shop of Wayne was located and where our classmate Russ Sage practiced the barbering trade for many years at his business the Scissors & Comb. The barber shop is still the place to go to discuss all things Ephrata Tiger. Now, back to Basin Street.



On the opposite corner from Williams Jewelry was Don's Rexall Drug Store, complete with a soda fountain where for two years Pat Loosemore served up the lime cokes and strawberry shakes. Don Thompson dispensed pills from this location for 33 years. Today Harrison's Fine Jewelry occupies this spot.

Across from Harrison's is The Bookery where local and regional authors are featured. Next door to the bookstore is Jim's Barber Shop where you may recall Jerilyn's parents operated Spark's Jewelry. Jeri remembers how she used to hide the stuff she liked until she earned enough money babysitting in order to be able to go back and buy it.

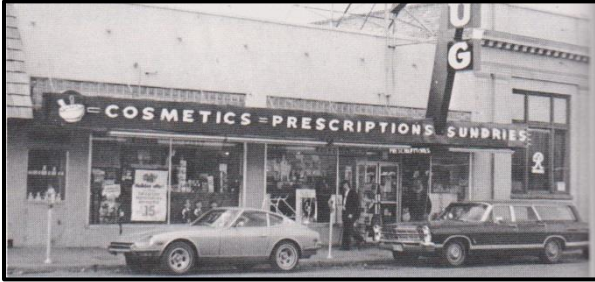


Beyond that was the Bjorklund's Mens Wear, later Geesey's, where the guys ordered their letterman sweaters and got spiffed up for school dances. Times changed and the business was closed. Currently there is not a men's or women's clothing store in Ephrata. WalMart is as good as it gets.

Over across the street you'll see where Loree's Super Market, Doug's father Lyle's business, was located. In 1950 eggs were selling for 47 cents per dozen and a carton of Camels, Luckies, or Chesterfields sold for \$1.93 per carton. After the Super Market the building housed a Western Auto Store for many years but eventually that business lost out to the big box stores. A variety of restaurants have come and gone from this location with "The Flame" being the most recent occupant. Get an ice cream cone from here and go next door to the City Plaza and enjoy viewing the giant wildlife mural on the wall of an adjacent building painted by Ephrata High School students.



This Plaza area was once site of Greenlee Furniture; then Galfano's Restaurant prior to its burning down. Ron McComb shared, "Remember the woman hired to teach Spanish in Ephrata High School? I forget the year but it was during our time there. She got tight one night and drove her car through the front window of Greenlee's Furniture Store. She disappeared almost immediately afterwards, never to be heard from again."

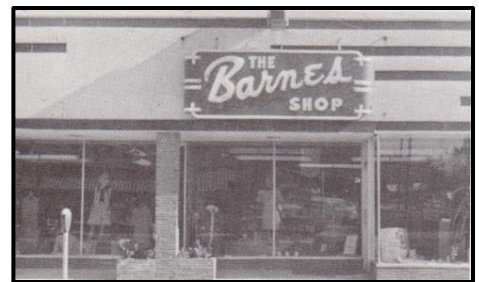


Across from the Plaza is the building once occupied by the Ephrata Bakery, a stopping spot on our journey home after another day in school. I can still smell those delicious raised donuts baking can't you? The Sole Performance sporting goods store and athletic club are now located here - great place to find Tiger apparel. Next door, the empty building is a "sign of the times" and the previous business moved to smaller quarters in the old bank building on the corner. In our day this building was where the Ephrata Drug, with Elaine Porter at the food counter, was located. It is also where Marilyn Nickel and Vickie Thornton worked the till. Directly across Basin and on the corner in another old bank building was where Hal Peterson sold insurance, Roy Mundy sold real estate and where my daughter and I sold airline tickets at Pioneer Travel.



Across First Avenue and also on the corner is a parking lot. In our day there was a business there, Ping Electric Music Bar, and where, according to Ron McComb, "he shopped excessively and purchased all of his Martin Denny phonograph records." In the same block KULE 730's office was located along with Rollins's Department Store and the R & M Shoe Store and Children's Wear, which advertised that clothing was available "from cradle to crew cut". At the shoe store you could step into an x-ray machine so you could see how your feet fit inside your shoes.

The J. C. Penney on the left has sat empty for years. The First Avenue Pizza Parlor, on the right, is where young ladies of our day shopped for their Pendleton skirts at the Barnes' Shop. Down to the next corner Fletcher Hardware served the community. It is now housing over-flow employees of the Grant County P. U. D. From here you can see where the new Tequila's is going up. At the end of that block is the square building that used to house Snyder's Repairs with the home of everyone's favorite typing teacher located on the top floor.



Across from the Snyders is the Bamboo Shoot, formerly Bill's Chinese Restaurant, and before that Vonette's Restaurant and Lounge. This business belonged to the Jolliffe family and was named for our former class mate Glenette and her sister Vondell.



Further down on the opposite side of the street was Jolly's Drive-In, a favorite hangout at noon and after school for school kids. Jolly's was also owned by the Jolliffe family and one of their employees was Jeri Sparks. Jeri remembers working there in the summer of 1961 when Ephrata was declared the hottest spot in the U. S. A.

Jeri was no slacker she *really* wanted that jewelry at her parent's store. She had also worked across the street at the Lee Theater as a cashier and usher. She was the person shining her flashlight on all the kids doing what they shouldn't be doing. No details on specific occurrences are available at this time.

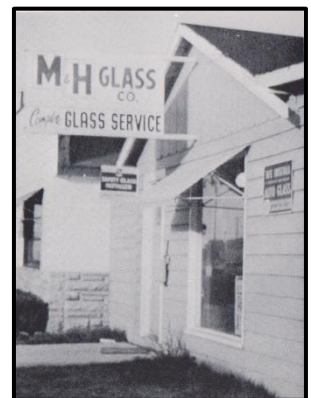
Remember when the Lee opened? In 1952 we all got to march to the theater from our barrack-like schoolrooms and watch the 'King Solomon Mines' starring Deborah Kerr and Stewart Granger. It was the story of an adventurer leading an expedition into uncharted African territory in an attempt to locate an explorer who went missing during his search for the fabled diamond mines of King Solomon. It was pretty exciting watching Zulu warriors in their "high-flying" umGhebulo dance where it appeared as though they wanted to pull down the sky.



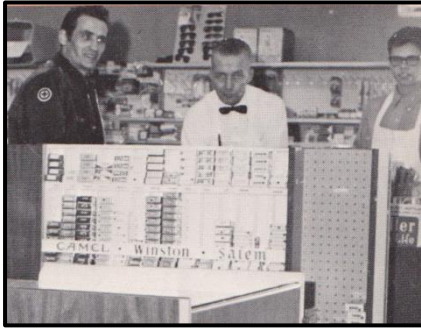
"Speaking of the Lee Theater", Ron McComb added, "When the film version of Leo Tolstoy's 'War and Peace' came out in 1955 someone decided that its showing should be some sort of cultural event. A great deal of fuss was worked up on the evenings of its performance. What I remember in particular was that the ushers, Georgia Sanchez in particular, wore their high school prom dresses to guide the attendees down the aisles."

The theater and Jolly's bordered along Fourth Avenue and it was on this street that Georgia Sanchez's father operated Wilbur's Auto Re-build before moving over onto "A" Street. Mr. Sanchez's motto was: "If it's banged up, we'll fix it".

Proceeding down the street, you'll see the Boylan's insurance office. This was where the Thornton family lived and worked. Upstairs Vicki lived with her parents and brother while downstairs the Thornton's Ephrata Paint Company was busy catering to its customers. (You could also say that they were busy 'painting up the town'). Next door at M & H Glass John Loosemore, Pat's dad John was doing a brisk business fixing broken windows. M & H ownership has changed but; for over 60 years it has been known as M & H.



At the opposite corner remember that little restaurant, Fern's Grill? The bell rang at noon time and it was an all-out sprint to see who could get first in line. Remember how crushed we were trying to jam in and purchase a really greasy hamburger? I can still see the shine on the bun! If we couldn't get in at Fern's we could go across the street to The Pantry Shelf for our lunch. This was also the site for the NW Greyhound Bus Depot. Marilyn Nickel remembers that her grandmother worked here.



Past the bus depot was the Hiland Market, currently the Four Square Church, where you could call in your order and it would be sitting in a box ready to go when you got there to pick it up. They even ran charge accounts. Next door was where Lucas Furniture was located, in the current office of the Grant County Museum. Mike and Dwight Yates worked as furniture delivery boys for Mike's dad.

Across the street from the Lucas Furniture was Howard Nessen's Ephrata Bowling Center. For pay of 10 cents per line energetic, young men such as Danny Gallagher, Allan Clark, and John Fink could work as pinsetters. According to John, that job came to a screeching halt when one day he showed up to work after school and automatic pinsetters were being installed - much to the surprise of the student workers.



Further up Basin Street you can do a "turn around" at the State Highway Department where Marilyn Nickel's mother worked in the office. You can either return down Basin or cut across by DK's Drive-In, down toward the American Legion, formerly the Elks Lodge, the sponsor of a formal teen dance known as the "Silver Bubble Ball". Ron McComb relates the story of a nocturnal visit, "One night I went over to the Elks Club where they had strippers performing. I could see one of them through a small back room window if I stood tip-toe on a big box that was nearby. The stripper was changing her clothes but I didn't get a chance to see any of her vital parts...just the top of her head. This was hugely disappointing".



Continue on until you reach a dead end. You will be looking at the Ephrata High School Sports Complex with soccer field to the right and softball fields straight ahead. Turn left and you will travel past the track and field events area and looking further over past the bus garage you can see a first-class baseball field. (1960 baseball field)

Turn in at our old school parking lot and view what is left of our former high school, now referred to as the annex. At the annex basketball court the Tiger painting on the wall, a gift of class of 1959, is still looking menacingly at the opponents. Junior Varsity and "C" squad basketball and volleyball games are held here. The upper balcony is a weight room and the fine arts room has been enlarged and is called the Performing Arts Center. The classrooms are gone.





Out back Kiwanis Field, home to football and track, is a much improved facility. No more blisters in the rear from the wooden bleachers, aluminum seats have been installed. This field is the site of many victories and for some un-named classes the place where character was built while suffering the agony of defeat.



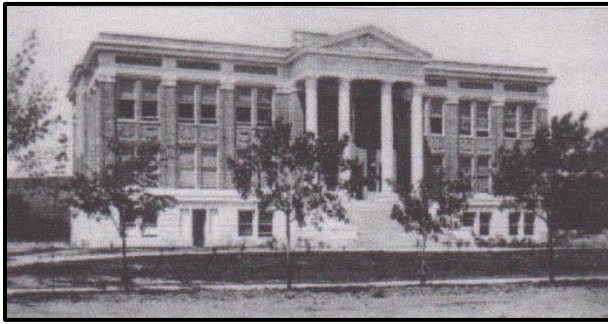
Next door to the annex, our old junior high building, sitting next to the “green building”, the original high school, is being used for high school over-flow and kindergarten classrooms. I have it on good authority that the peep hole in the door to the girl’s locker room has been plugged! This school is also where Al Husted, Mike Lucas, and John Fink would “slip” the door locks and go in and play basketball. Mike assures me, “There was never a thought to doing damage, only wanted to play ball and have a good time. It was just innocent fun back then”.



Behind the old junior high is the current Ephrata High School, built on the site of the old green high school and the tar-paper barracks that we attended in the sixth grade. The current high school is a four-year school rather than three-year when we attended. Remember we were “held back” in order to achieve that number – we spent the 9th grade at the junior high. Sometime along the way the high school returned to four-years. (Tar-paper school.)

Don’t miss the Tiger Tennis complex behind the school on the site of our old baseball diamond. The class of 1960’s storage building which is to be presented to the tennis program will soon grace this area. Turning down “C” Street, you will drive past the vacant lot that used to be the location of EHS tennis courts. With a lot of imagination you can see Jerry Shaw, Dwight Yates, and Dan Gallagher out there pounding out the ground strokes.

Down the street Nicoles Funeral Home is still Nicoles Funeral Home and running the same service. (I am sure that at this point McComb would say, “Yes, people are still dying to get in there”.) Mike Lucas remembers, “Several boys daring each other to go into the funeral home to look into the casket of a local football player who was killed on the football field during a game. Several ended up going even though they knew it would be a scary experience, nobody wanted to gain the reputation of being a ‘chicken’”.



Moving on - At the Grant County Courthouse you will see little change since it was built in 1917 except for the law and justice annex at the back of the building. Diane Delaney's dad worked here as a W.S.U. Extension Agent. Recently Marilyn Nickel Sage retired there from the Assessor's Office. Across from the courthouse is the former home of the Washington family. The house has recently been renovated and is now being celebrated for its historical significance.

Next door to the house is the United States Bureau of Reclamation building where business is still carried on but in a much smaller scale than earlier day. Parents of the class of 1960 came to Ephrata to work for the U.S.B.R and the Grand Coulee Dam Project and because of this, classmates Myrna Ries, Melrene Larson, and Dan Gallagher were among others who spent thirteen years in the Ephrata School system. When he was young, John Fink could be found sitting on the steps of the building selling the Grant County Journal.



Proceeding on you will find the Grant County Public Utility District headquarters. The P.U.D. is the largest employer in Grant county and owner/operator of Wanapum and Priest Rapids Dams.



Further down, behind the Basin Retirement Home, is the Ivy Chapel Bed and Breakfast. The Chapel was previously the Presbyterian Church where Joyce Brewington's father ruled the pulpit.

Continuing down "C" street you will see the home of Janice Allgeier on the left. This was where members of the Tanda-ko-ci Camp Fire Girls met for their meetings, counting out their beads that they had earned for a variety of reasons including public service, camping skills, and crafting projects.

Soon you will encounter the vacant building of Ralph's Gun Shop. You are in the territory of a group of incorrigibles who liked to play Halloween tricks. One Halloween night, according to ring-leader Nola Clayton, a group of sixth graders which included Carole and Mary Ann Ahlquist, Linda Mutch, Lyndalou Vaughn, and Nola herself, decided to soap the windows of Ralph's Shop. The group was really getting busy with their dirty deed when they saw the owner standing on the other side of the window...without the lights on, staring back at the sneaky bunch of girls. According to Nola, "The owner scared the "heck" out of us and we retired from our lives of crime with this being a favorite memory of the good ole days."

Across the street from Ralph's Shop was the URM Polka Dot grocery store. I recall being totally amazed when the store owners brought in a real-live Aunt Jemima. (Remember this was Ephrata in the early 50s.) There she was in her bright red dress, white apron and bandana headpiece flipping hot cakes from a mix for the eager customers.





Further travel down the street you will be one block over from the long-deserted Ephrata Swimming Pool. What fun the kids of Ephrata had in that special time of their lives when they would spend the day fully refreshed and having fun with their friends before having to bear the heat of the late afternoon, trudging up to either one of the “Heights” with wet towels hanging around their necks. No one deterred, they returned the next day. (1958 bathing beauties)

Nearby at South School, now Parkway, things haven’t changed much except the sagebrush fields are now grass. Remember the great fun we had creating our trails and little “sites” that we had cleared of sagebrush. It didn’t take much to make us happy back then. We were totally oblivious to the monster canal being built just behind the school. It would take years for us to realize the importance it would play in the growth of Ephrata and our schools. Parkway is



now a school strictly for fifth and sixth graders. The seventh and eighth graders attend a newer school over near the base of the Columbia Basin Hospital and near the new swimming complex called Splash Zone. Parkway holds special memories for my family, Dick and I, our three children, and our five grandchildren are all graduates of this school. (Class of 1960’s 2nd grade picture at South School)

From Parkway School you can return to Basin Street and head back to Moses Lake or maybe you might want to visit your old home or take a side trip. Possible side trips:

From Basin Street you can head up East Division toward Ephrata Heights. After crossing over the railroad tracks if you look to the right you will view the enlarged storage facility of the Odessa Union Warehouse. According to Ron McComb, who certainly appears to have been an adventurous lad, he climbed the grain elevator with a girl whose name he can’t recall and when they got to the top they found it hilariously funny to sing “I’m in the mood for love, throw back the sheets and thrill me!” His memory isn’t any better at this, he thinks that maybe it really was “They ask me why I’m blue? I say it’s because of you.” Ron is quick to assure that no alcohol was involved.

Looking off to the left from Division during the 1950s, the site of the Civil Defense Tower manned by individuals searching the skies for suspicious airplanes could be seen. Near the tower was the best sledding hill ever. You didn’t even need a sled - cardboard worked just fine. All you had to do was avoid the rocks and sagebrush and you were assured a good time.

Traveling on up to the top of the hill you will encounter the Ephrata Heights Shopping Center where the Thriftway IGA Market, Minute Drug and Fountain (named because it was a minute from main street), Hap's Bakery, and the Triple R Service were located. There is still a market and service center but the drug store and bakery are no longer in business. During the 1950s I worked at the drugstore stocking shelves and running the cash register. I remember Mr. Forsberg, the owner of the Thriftway at this time, as being a very patient man after all; he employed the likes of Allan Clark and Ron McComb as box boys. Across the street, then and now, sits the Memorial Christian Church which was originally the Ephrata Airbase Chapel.

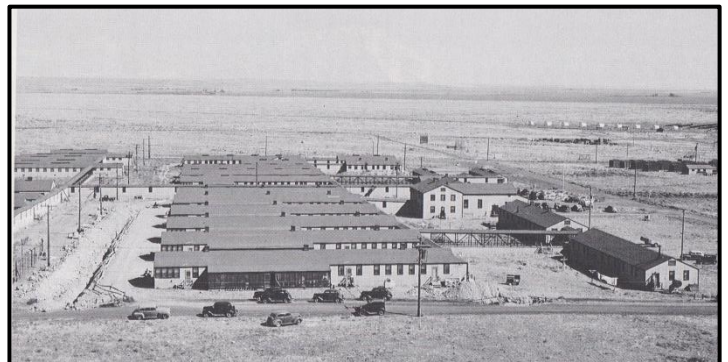


Continuing up Division you will encounter "E" Street where Myrna Ries lived, "F" Street, the home street for Allan Clark, Sandra Folsom, Linda Pierce, Dwight Yates and Mike Lucas, "G" Street the home street of Janice Richardson and Marilyn Nickel, "H" Street the street of Steve Molitor, Bev Elshire, Danny Miller, Jim Frear, Jim Webber, and Paul Kuester. Did you know that at one time "E" Street was going to be named Elm, "F" Street was going to be named Fir, etc, etc.? The naming group got to "I" Street with Ivy and that was the only one that stuck.

Off to the right on "H" Street is the Columbia Ridge Elementary School which was named by a bunch of sixth graders who went on to graduate from Ephrata High School in 1960. We all kind of claim credit but it was really Janice Richardson who came up with the winning name for our class. It took me a few years to realize that those "Ridge Boys" throwing rocks at me while on my way home from school weren't really being mean, they were just trying to get my attention.



If you travel on to the Ephrata Airbase you will still see the airport terminal and runway along with the big hangar buildings. The terminal housed the FAA offices.



The tarpaper barracks left behind when the army departed the base is where early-day Bureau workers lived with their families, the Dan Gallagher family among them. It is also where we attended the fifth grade while waiting for Columbia Ridge to be built. The barracks have been replaced by a housing facility for Grant County prisoners, the Grant County Public Works Department, and a Wind Tunnel Manufacturing business.

The airbase holds a lot of memories for the classmates of 1960 where somewhere among "best forgotten and long remembered activities" we learned to drive.

Head back down the hill and over to First Avenue NW for a journey up to the other Heights – Grandview. I really don't know if they had a grander view from over there than we had on our side of town. Crossing the main canal the first street encountered is Patrick Road, the site of a memorable scene reported by Joyce Brewington. It seems that Joyce and her future husband Dennis found a place for parking (necking, if you will). One time the couple was caught at their parking spot at the end of the road by the police while they were in her parent's car (remember she was a minister's daughter). When the policeman saw the clergy sign on the back window of the car he told the couple to continue on! Classmates living on Grandview Heights included Jerilyn Sparks and Sue Nalder. Sue's house was where some of the class' first girl-boy parties were held.

Over to the left side of Division is Fairview Heights. Do you suppose their view was only fair? Along the canal sits the Episcopal Church where Heather O'Connell's father served his parishioners.

Towering over this area is the famed Beezley Hill, site of numerous campaigns fought over the desired formation of white rocks. The tradition of EHS graduating classes placing white rocks in the shape of their class year began in 1928 and for a while the hill was called the "Hill 28". The interests of the class of 1960 were placed in the hands of one Bob Nelson. After all, who else could single-handedly take on the class of 1961? Occasionally reunion classes "think" about conquering the hill and changing the number but that never seems to happen. There is a number up on the hill at this time; my bifocals prevent me from determining which it is.

The tour may or may not end at this point. But if you continue you are on your own. I have enjoyed taking this journey to the past with all of you. Even though I see a lot of Ephrata I find it is good to look back and remember all the good times and good friends I enjoyed during my school days. Thanks to all who shared their memories with me to make for a fun-filled tour.

Ber



Living in Ephrata is a good reason to cheer!
(1958)